



introduction to



creating outstanding attractions

e: [info@dchull.co.uk](mailto:info@dchull.co.uk)  
w: [www.dchull.co.uk](http://www.dchull.co.uk)  
t: 07947 161126

## Introducing - A collaboration of professional local designers

*It is our aim is to raise awareness of our unique collaborative skillset, to highlight our impressive portfolio and to offer successful and innovative design solutions to a range of challenging projects.*

*With a collective experience of over 90 years within the exhibition, interior and heritage industries and having worked on a number of high profile national and international attractions, we have the capacity and aspiration to realise and deliver schemes of all sizes.*

*Enthusiastic about the possibilities we can offer and keen to help you achieve your goals and contribute to your continued standards of excellence. We are fully committed to our part in your professional and commercial success.*



Linking together to enable the delivery of turn-key inspirational creative projects

e: [info@dchull.co.uk](mailto:info@dchull.co.uk)  
w: [www.dchull.co.uk](http://www.dchull.co.uk)  
t: 07947 161126





**Services**

- Concept and Visualisation
- Content development
- Interpretation management
- Graphic Design
- Illustration
- Photography
- Print Management
- Interactives
- Engineering Solutions
- Audio visual
- Lighting
- Conservation
- Object mount manufacture
- Signage and Way-finding Solutions
- Exhibit manufacture and Installation

DISPLAY

CONSORTIUM

The Key to realising your requirements



**Project Management**

- Feasibility studies
- Estimating and costing
- Construction and design (CDA)
- Disability compliance (DDA)
- Contract implementation
- Health and Safety
- Site and sub-contract

**Our Clients**

- Museums
- Exhibitions
- Mobile/travelling displays
- Visitor centres
- Restaurants/cafes/bars
- Event and Interior design
- Businesses
- Point of Sale

KINGSTON UPON HULL



introducing **IAN GOODISON**



*Ian is a fully qualified museum and exhibition designer with over 35 years experience within museums and galleries. Now director of Ian Goodison Design Consultancy, he previously worked in a number of high profile companies before joining Hull City Council's Museums and Galleries service. Ian was tasked with the design development of the award winning Museums Quarter incorporating three prestigious museums.*

*Ian brings a wealth of creativity, experience and knowledge to a range of challenging projects in museum, heritage and event design. He prioritises communication, listening to clients needs, consulting and guiding them through the design process. His approach is to encourage feedback with all user groups and ultimately achieve a highly effective, successful and visitor orientated design solution.*



*“Developing the appropriate methods to ensure visitors connect with thought provoking subject matter has provided me with the most fulfilment”*

*Ian Goodison, Director, IGDC*





showcasing

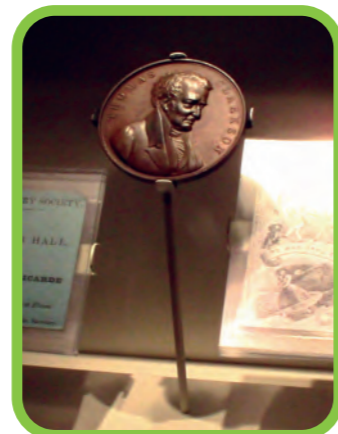
# WILBERFORCE HOUSE

*Wilberforce House Museum is the birthplace of the world renowned abolitionist William Wilberforce and is located in the Museums Quarter in Kingston upon Hull, England. The house showcases the life and work of one of Hull's most famous sons and tells the story of the struggle by Wilberforce and his contemporaries to abolish the slave trade.*

*The museum reopened after a two year and £1.6 million redevelopment in time for the 200th anniversary of an Act of Parliament abolishing the slave trade in the British Empire. A unique exhibition housed in a unique grade I listed building.*



*Ian developed the design from a very challenging brief working closely with curators and international experts on emancipation and slavery. He managed the installation of a diverse and unique range of exhibits. The new displays are informative, thought provoking and deal with the powerful content with respect and sensitivity.*



wilberforce house museum  
streetlife museum  
hull and east riding museum  
museum of liverpool  
world olympic museum  
doncaster museum and art gallery  
istanbul aquriam  
portsmouth historic dock  
ripleys believe it or not  
nu bar willerby  
Peoples history museum  
loungesouthella  
national football museum  
york castle museum  
Eureka childrens museum  
manx museum  
golden age of the pharaohs  
the treasure house  
hartlepool historic dock  
tower of london  
weston park museum  
moorcroft pottery  
national railway museum  
sewerby hall  
james herriot museum  
ferens art gallery  
national coal mining centre  
durham museum of archeology  
skidby mill visitors centre  
Cliffe Castle Museum  
barnsley museum  
dover castle  
hollingworth lake visitors centre  
alnwick castle  
beaulieu motor museum  
the deep submarium

working together and individually to create outstanding attractions



showcasing

# INFORMATIVE EXHIBITIONS



Welcome to the Humber - The UK's Energy Estuary Exhibition Greenport Hall in Hamburg, Germany.



Conceptual space for Modal Training. Accessible and approachable information based areas that promote the dynamic nature of this streamlined business.

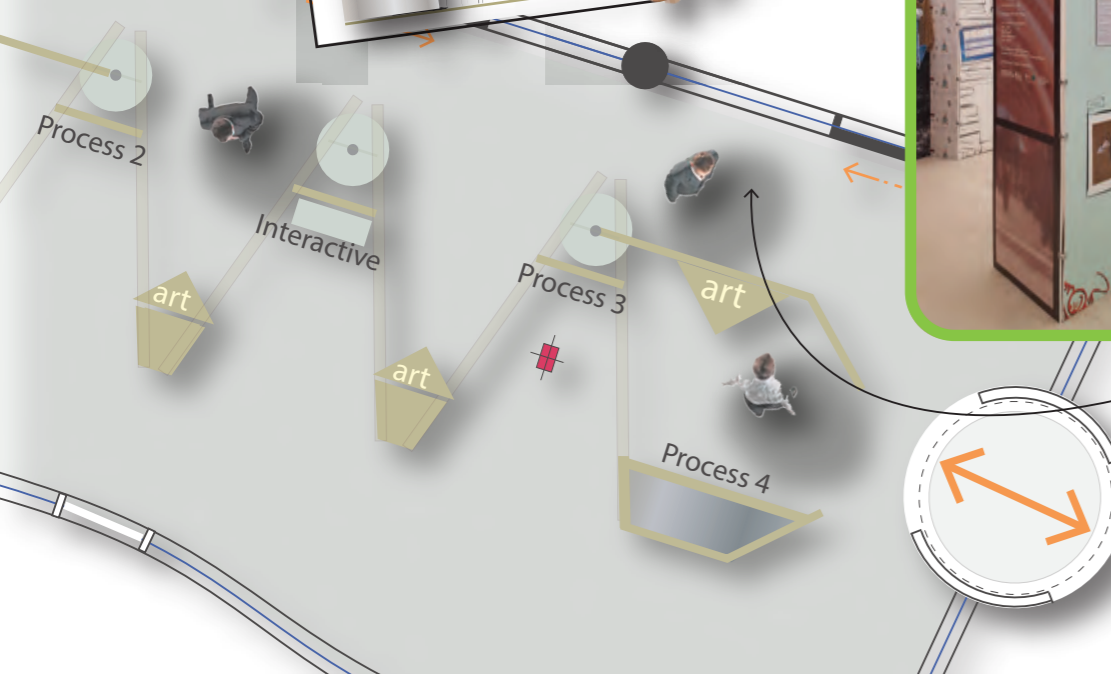


What's Happening in Hull  
A touring exhibition in Hull communities to inform local projects undertaken across the city. The exhibition featured a visitor information touch-screen kiosk with full Q&A facility.

Our Histories Revealed: Africans in Hull and East Yorkshire.  
A fascinating, interactive exhibition - part of the Africans in Yorkshire Project. A thought-provoking examination of a little-known aspect of British social history celebrating the presence and contribution of people of African descent in the Hull region, from 1750 onwards. Part of Hull: UK City of Culture celebrations. 'Masks' by Sam Lancaster. A powerful art-piece commissioned for the exhibition.



Doodles and Drawings - A temporary exhibition featuring highlights from the Hull archive collections and a 'behind the scenes' look at curatorial and conservation processes and procedures.



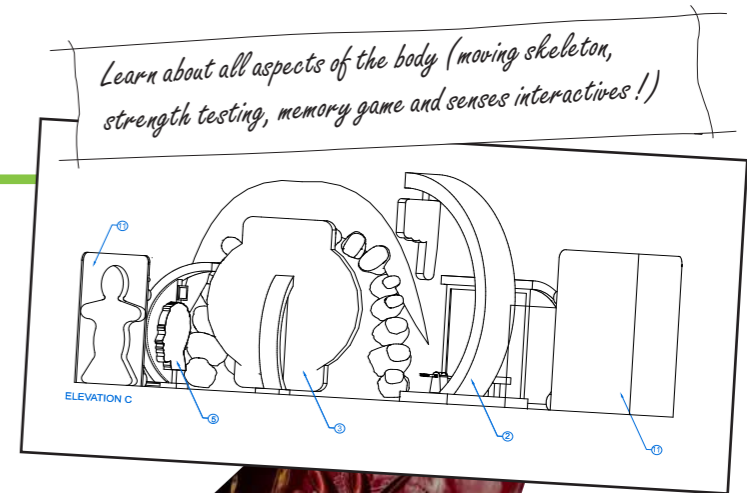




Painted mdf circular unit housing robust hands-on cartesian diver model. Squeeze the bottle and see what the float does!

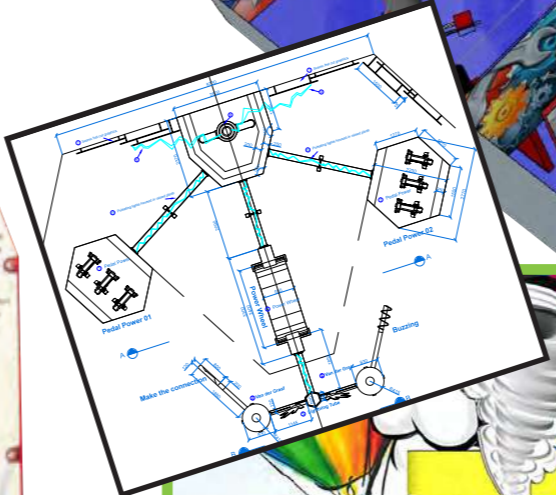


Space area to include rc mars rovers, ride on gyroscope, creater hoppers, build a rocket, space suit up, planetarium and a 5D Lift off motion ride!

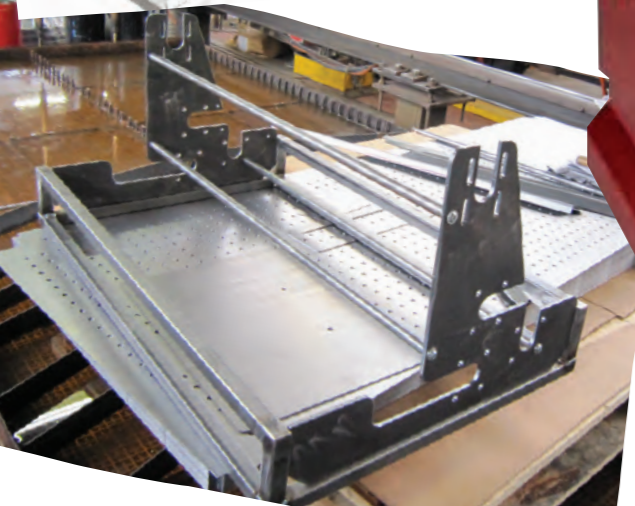


Learn about all aspects of the body (moving skeleton, strength testing, memory game and senses interactives!)

Powder coated Fire red steel unit to be in style of original Simon milling machine. Viewing window incorporated to view grain on graphic roller spinning, as the handle is turned!



- Science centre learning zones:-
- Sound
  - Power
  - Water
  - Air
  - Light
  - Mechanics
  - The Body





introducing **MICHAEL COX**



*Mike Cox has over 25 years experience working within the museum and visitor attraction industry. He started his career at Eureka! the National Children's Museum, then went on to work on projects with the Yorkshire Museum's Council and continued to work on world class projects both in this country and abroad,*

*Mike works under the banner of Michael Cox Associates and has been trading since 1999. His main objective is to offer an element of creativity together with pragmatism and a surety that any budget can be maximised to its full potential, without any reduction in quality.*



*“Effective design should never be merely a personal statement, but an all-encompassing solution that captivates its audience.”* Michael Cox, Director, MCA



showcasing

# ISTANBUL AQUARIUM



*This exciting £268million project is the very first visitor attracton of this magnitude in Turkey. Its 64 tanks are home to an enormous variety of fish and other sea creatures,immersing the visitor into our planets amazing seas and oceans.*

*During his 18 month role as design manager Mike has utilised his vast knowledge and experience to oversee and manage local contractors and overseas specialists. This ensured that the original concepts and themed displays where developed into creative, informative and spectacular spaces.*

wilberforce house museum  
streetlife museum  
hull and east riding museum  
museum of liverpool  
world olympic museum  
doncaster museum and art gallery  
**istanbul aquriam**  
portsmouth historic dock  
ripleys believe it or not  
**nu bar willerby**  
Peoples history museum  
**loungesouthella**  
national football museum  
york castle museum  
Eureka childrens museum  
**manx museum**  
golden age of the pharaohs  
**the treasure house**  
hartlepool historic dock  
**tower of london**  
weston park museum  
moorcroft pottery  
national railway museum  
**sewerby hall**  
james herriot museum  
**ferens art gallery**  
national coal mining centre  
durham museum of archeology  
skidby mill visitors centre  
**Cliffe Castle Museum**  
**barnsley museum**  
**dover castle**  
hollingworth lake visitors centre  
**alnwick castle**  
beaulieu motor museum  
the deep submarium

working together and indivdually to create outstanding attractions



# introducing JAMIE ROLLERSON



Jamie is a qualified Museum and Exhibition designer with over 20 years of experience working within museums and galleries on varied project sizes and budgets. He formed Activation Ltd after three years working within the industry with a clear intent to bring together specialist teams for individual projects.

Possessing a portfolio that includes very successful international attractions (World Olympic Museum and the Museum of Liverpool) Jamie believes well developed innovation is the key. Often specialising in the finer design details with an approach of respect, care and finesse. He has been priviledged and trusted to display many priceless artefacts. Building strong relationships with project teams and working to a common goal is paramount to the overall success of his displays and drives him to facilitate creative and visitor immersive solutions.



*"Seeing visitor enjoyment and engagement in an exhibition you've created is inspirational!"*  
Jamie Rollerson, Design director, Activation Ltd





showcasing

# MUSEUM OF LIVERPOOL



Activation were invited to create and install bespoke objects displays for the prodigious £72million project - the largest newly built national museum in the UK for more than a century. The Museum tells the story of the city and its people, with many historic artefacts from Bronze age pottery to the Beatles iconic early stage suits. Since its opening in 2011 it has won many awards and continues to feature in the UK's most visited lists.



wilberforce house museum  
 streetlife museum  
 hull and east riding museum  
 museum of liverpool  
 world olympic museum  
 doncaster museum and art gallery  
**istanbul aquriam**  
 portsmouth historic dock  
 ripleys believe it or not  
**nu bar willerby**  
 Peoples history museum  
**loungesouthella**  
 national football museum  
 york castle museum  
 Eureka childrens museum  
**manx museum**  
 golden age of the pharaohs  
**the treasure house**  
 hartlepool historic dock  
**tower of london**  
 weston park museum  
**moorcroft pottery**  
 national railway museum  
**sewerby hall**  
 james herriot museum  
**ferens art gallery**  
 national coal mining centre  
 durham museum of archeology  
 skidby mill visitors centre  
**Cliffe Castle Museum**  
 barnsley museum  
**dover castle**  
 hollingworth lake visitors centre  
**alnwick castle**  
 beaulieu motor museum  
 the deep submariium

working together and individually to create outstanding attractions

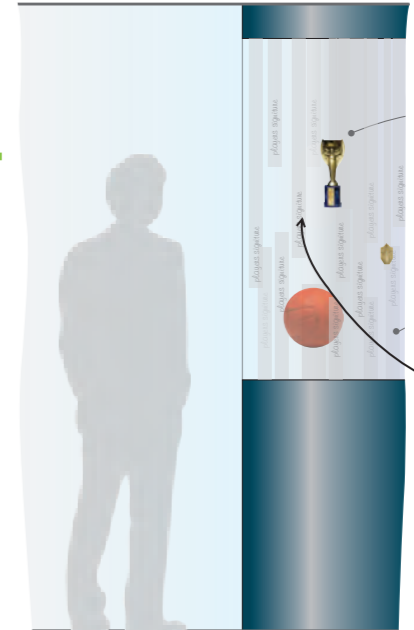




*Freestanding book cradle to be formed out of cast acrylic. Designed to meet all conservation requirements!*



*Specialist fittings support ephemera creating individual "object trees" This allows maximum layout flexibility!*



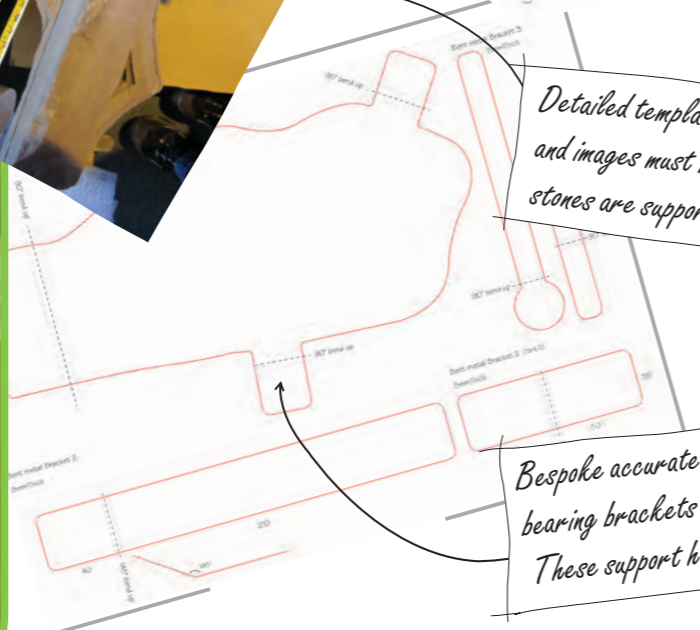
*Discreet mounting techniques utilised so objects appear floating within the showcase structure. Labels are incorporated in a style evoking the feel of ribbons!*



*Powder coated brass spider mount to support object with the least amount of pressure points!*



*Detailed templates, measurements and images must be taken to ensure stones are supported correctly!*



*Bespoke accurate lazer cut weight bearing brackets to be cut and formed. These support heavy items discreetly!*



*Stones to be on inert high density foam padding. Powder coated steel trays to be of the correct weight bearing gauge and manufactured structure!*





showcasing **QUALITY INTERIORS/EXTERIORS**



*Art Café, Humber Street Gallery, Hull. This was developed as part of Hull UK City of Culture 2017, creating a mix of food, drink and art in one of the newly refurbished warehouses on Humber Street - site of the original 'Fruit Market'.*

*KC Reception, KCOM stadium west stand reception refurbished with new desk reception, entry system, branding and decoration.*



*Art Market Gallery, A popular art gallery in Cottingham, East Yorkshire, was further enhanced by the extension of new galleries to showcase work from both new and established artists in conjunction with the world renowned publisher Taschen.*



*Crown & Cushion, Trinity Lane, Hull. The previous 'Trinity Bar' was revamped and newly branded, as 'Crown & Cushion' a traditional bar complimented with a stripped back vintage interior, bare brick, traditional signwriting, period lighting and reclaimed furniture. The bar also offers a fine menu in partnership with Hull Pie.*



*Caffè Perte in the traditional 'Avenues' area of Hull. Creating a contemporary look to a deceptively large café bar on two floors and with two outside seating areas.*

working together and individually to create outstanding attractions



# introducing SAL BAKHSH



Sal Bakhsh is a qualified Museum and Exhibition designer with over 25 years of experience. As the director of Edge he has vast experience designing and installing trade stands, cafe bars and public spaces around the world.

Sal's knowledge of lighting effects and interior surfaces combined with his talent for spatial awareness sets him apart. Adapting new and unusual materials to create a visual masterpiece is his forte. This is allied with a practical knowledge which is invaluable in ensuring projects are on time and in budget.



*"Its the combination of small design details that create the biggest visual impact"* Sal Bakhsh, Director, Edge



showcasing

# LOUNGE SOUTHELLA



*Lounge Southella succeeds at creating a much needed social meeting point in the west of Hull. Edge were asked to design a contemporary classy space, creating a relaxed atmosphere for eating and drinking. Edge incorporated flexibility and changeability to suit its customers needs depending on the time of day.*



wilberforce house museum  
 streetlife museum  
 hull and east riding museum  
 museum of liverpool  
 world olympic museum  
 doncaster museum and art gallery  
**istanbul aquriam**  
 portsmouth historic dock  
 ripleys believe it or not  
**nu bar willerby**  
 Peoples history museum  
**loungeouthella**  
 national football museum  
 york castle museum  
 Eureka childrens museum  
**manx museum**  
 golden age of the pharaohs  
**the treasure house**  
 hartlepool historic dock  
**tower of london**  
 weston park museum  
**moorcroft pottery**  
 national railway museum  
**sewerby hall**  
 james herriot museum  
**ferens art gallery**  
 national coal mining centre  
 durham museum of archeology  
 skidby mill visitors centre  
**Cliffe Castle Museum**  
 barnsley museum  
**dover castle**  
 hollingworth lake visitors centre  
**alnwick castle**  
 beaulieu motor museum  
 the deep submarium

working together and individually to create outstanding attractions



w o r k i n g t o g e t h e r a n d i n d i v d u a l l y



c r e a t i n g o u t s t a n d i n g a t t r a c t i o n s

e: [info@dchull.co.uk](mailto:info@dchull.co.uk)  
w: [www.dchull.co.uk](http://www.dchull.co.uk)  
t: 07947 161126

## Enabling you to realise you're perfect display solution

*"IGDC provided an unrivalled service in developing our design brief into a high quality reality. Ian worked closely with us to deliver a shared vision that placed our collections at the heart of the project, combining originality with outstanding value for money. This ensured audiences could appreciate the quality of our content within an aesthetically pleasing and professionally produced exhibition."*

Susan Capes  
Assistant curator  
Hull museums

*"MCA has worked on a number of schemes for Bradford Museums and Galleries. He combines innovation with real value in delivering a project. As clients the team have always been impressed by his capacity to realise the vision and to anchor it in practicality. He always exceeds expectations but never exceeds the budget."*

Daru Rooke  
Museums Manager  
Bradford Council

*"When we needed to update our displays I had no hesitation in asking Activation back to assist us. As always I was greatly impressed with their professional manner, creative ideas, flexible approach and their ability to produce the utmost quality whilst working within our tight deadlines. We now have a well received exhibition with very positive visitor feedback."*

Victoria Harrison, MA  
Collections Manager  
York Minster Historic Collections Team

*"Sal created an impressive and atmospheric socialising and dining environment that has far exceeded our expectations and has resulted in continued success for our business. Our diners have made many positive comments and return regularly. I fully recommend Red's unique approach to design and build."*

Dawn Nagta  
Co/Owner  
Nagra Bar and Grill Group